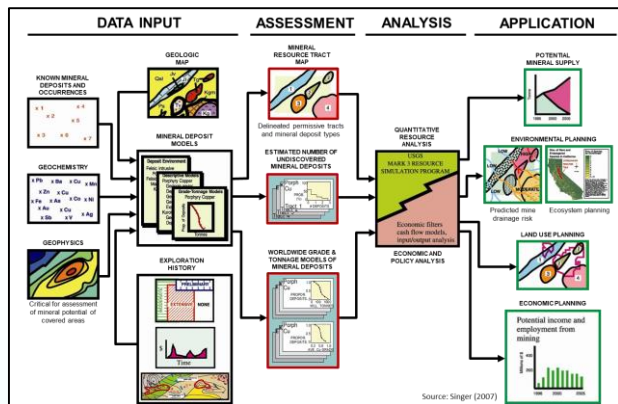




advangeo®
Prediction Software



Software Tool for Mineral Resource Assessment

Full combination and integration of mineral prospectivity modelling (MPM) methods and the three-part method, developed by USGS

System requirements:

- > Windows® 10
- > advangeo® 2D Prediction
- > Esri ArcGIS Desktop

advangeo®

Contact us:

Beak Consultants GmbH
Am St. Niclas Schacht 13
D-09599 Freiberg / Germany
Tel. +49 (0)3731 78 13 50
Fax +49 (0)3731 78 13 52

info@advangeo.com
www.advangeo.com
postmaster@beak.de
www.beak.de

© 2021
advangeo® is a registered trademark of Beak Consultants GmbH, Germany.

advangeo®
Prediction Software



MAP Wizard for advangeo® 2D Prediction

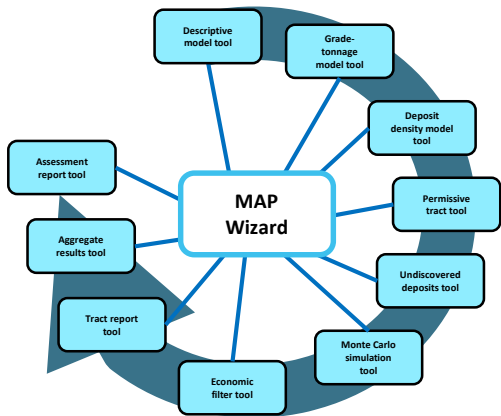
Mineral Resource Assessment Platform (MAP) for Quantitative Assessment of Undiscovered Mineral Resources



This activity has received funding from the European Institute of Innovation and Technology (EIT), a body of the European Union, under the Horizon 2020, the EU Framework Programme for Research and Innovation

Supported by:





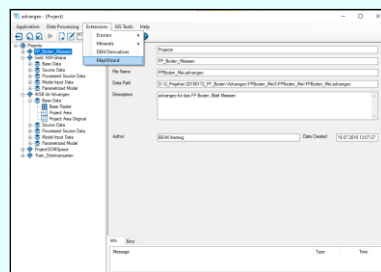
MAP provides an upgraded and enhanced software for the three-part quantitative assessment method, developed by USGS, which is used to provide estimates of the location and amount of undiscovered mineral resources:

- > Automation of the process of delineating areas to be assessed,
- > Classification of the assessment areas based on their mineral potential,
- > Estimation of the proportion of the undiscovered resource that could be economically recoverable and
- > Smooth workflow throughout the whole assessment process.

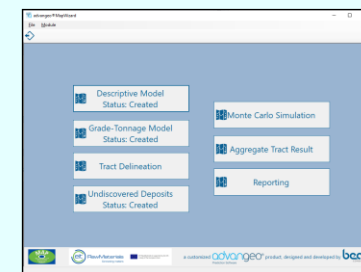
MAP Wizard for advangeo® 2D Prediction includes fully integrated tools for:

- > Descriptive Model,
- > Grade-Tonnage Model,
- > Tract Delineation,
- > Undiscovered Deposits (Deposit Density),
- > Monte-Carlo Simulation,
- > Aggregate Tract Results,
- > Reporting.

advangeo® 2D Prediction



MAP Wizard



Extension / Upgrade

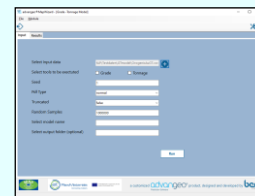
advangeo®
Prediction Software



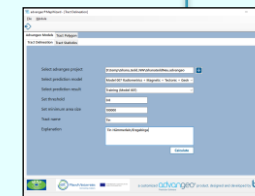
Descriptive Model



Grade-Tonnage Model



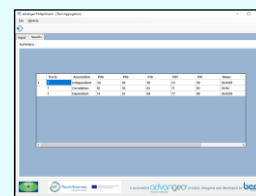
Tract Delineation



Reporting



Aggregate Tract Results



Monte Carlo Simulation



Undiscovered Deposits

