

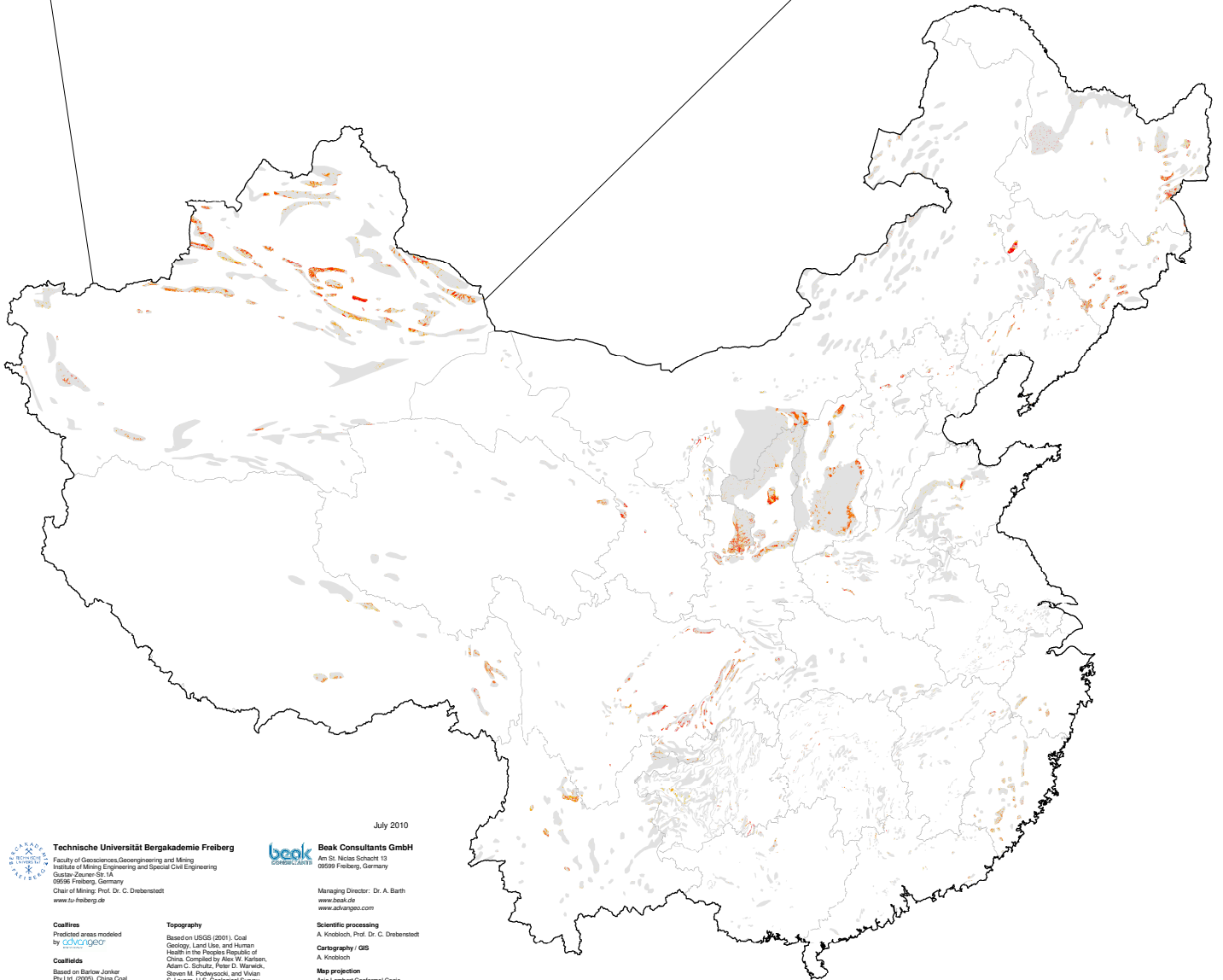
**Legend**

- Country Boundary
- Province Boundaries
- Coalfields

**Coal Fires**

**Probability [%]**

- < 55
- 55 - 60
- 60 - 65
- 65 - 70
- 70 - 75
- 75 - 80
- 80 - 85
- 85 - 90
- 90 - 95
- 95 - 100



July 2010

**Technische Universität Bergakademie Freiberg**  
 Faculty of Geosciences, Geoengineering and Mining  
 Institute of Mining Engineering and Special Civil Engineering  
 Gustav-Zeuner-Str. 1A  
 09599 Freiberg, Germany  
 Chair of Mining: Prof. Dr. C. Drebenstedt  
 www.tu-freiberg.de

**beak CONSULTANTS**  
 Beak Consultants GmbH  
 Am St. Nikola-Straße 13  
 09599 Freiberg, Germany

Managing Director: Dr. A. Barth  
 www.beak.de  
 www.advangeo.com

Scientific processing  
 A. Knobloch, Prof. Dr. C. Drebenstedt  
 Cartography / GIS  
 A. Knobloch

Map projection  
 Asia Lambert Conformal Conic  
 Reference system  
 Spheroid: WGS 1984

**Coalfires**  
 Predicted areas modeled  
 by **COALFIRE**

**Topography**  
 Based on USGS (2001), Coal  
 Geology, Land Use, and Human  
 Health in the Peoples Republic of  
 China, Compiled by Alex W. Karlson,  
 Adam C. Schultz, Peter S. Wernick,  
 Steven M. Podanyoski, and Vivian  
 S. Larsen. U.S. Geological Survey  
 Open File Report 01-318, U.S.  
 Geological Survey, Reston, 2001.

**Coalfields**  
 Based on Barlow-Jonker  
 Pty Ltd (2005), China Coal,  
 Third Edition, 2 Volumes,  
 Barlow-Jonker Pty Ltd, 2005.

The information presented on this map has been collected from a variety of data sources. Although all data has been processed and researched with special diligence, it may be inherently inaccurate and imprecise. The user recognizes the distortions and adjustments are necessary for the map presentation of geoscientific data. The publisher, author or host bears no responsibility for errors or omissions or for any damage or loss of any nature or kind resulting from incorrect, incomplete or discontinued data or information on this map. The user only is responsible for an appropriate use of data presented on this map. This map is not an authority on international boundaries.

